



## ASSEMBLY INSTRUCTION

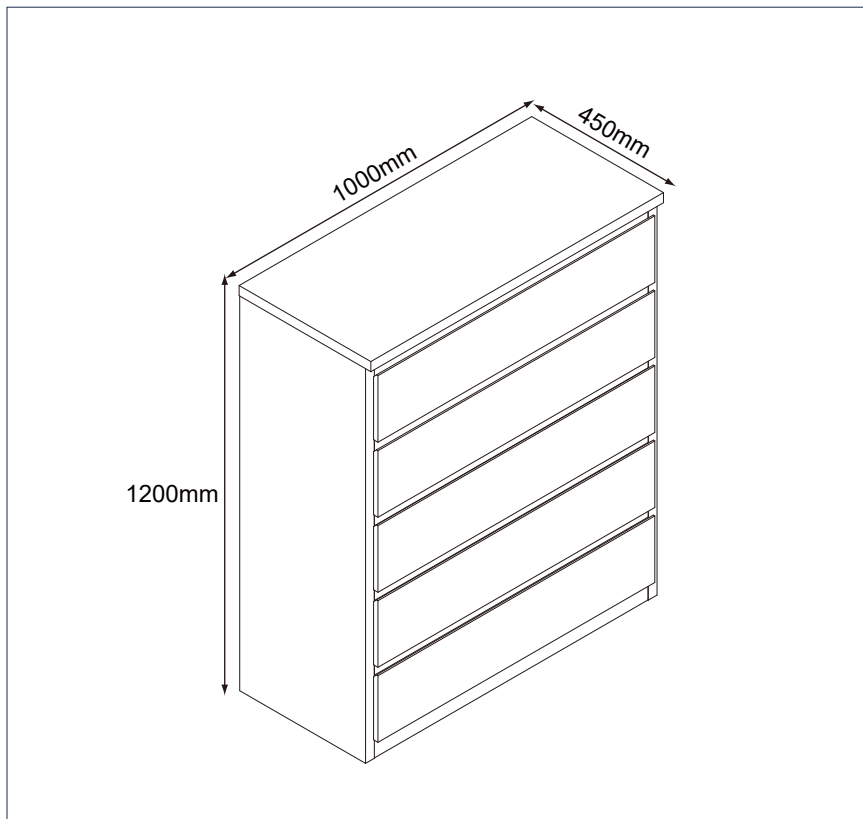
### KINCAID TALL CHEST

ITEM CODE 84740

Imported by Amart Furniture Pty Ltd, Qld, Brisbane Australia.

For any assistance with assembly or for missing parts please phone

Amart Furniture Road, Customer Service Free call 1800 351 084



Imported by Amart Furniture Pty Ltd, Qld, Brisbane Australia.

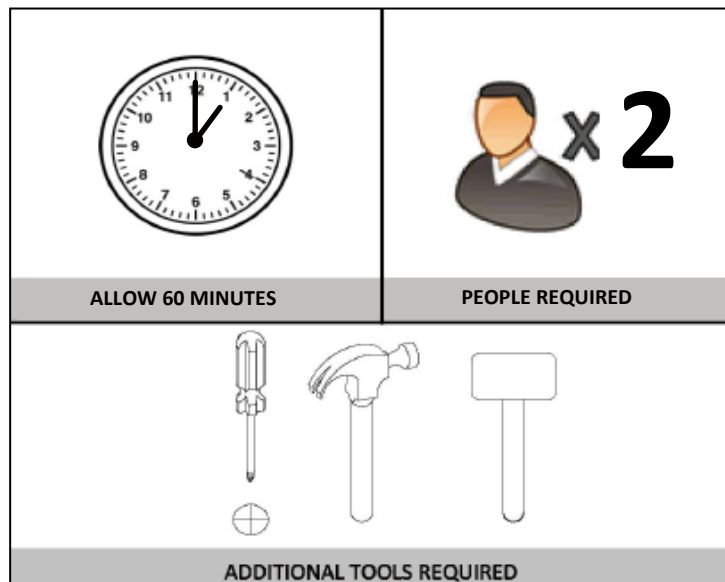
For any assistance with assembly or for missing parts please phone

Amart Furniture Road, Customer Service Free call 1800 351 084

## PRE-ASSEMBLY PREPARATION

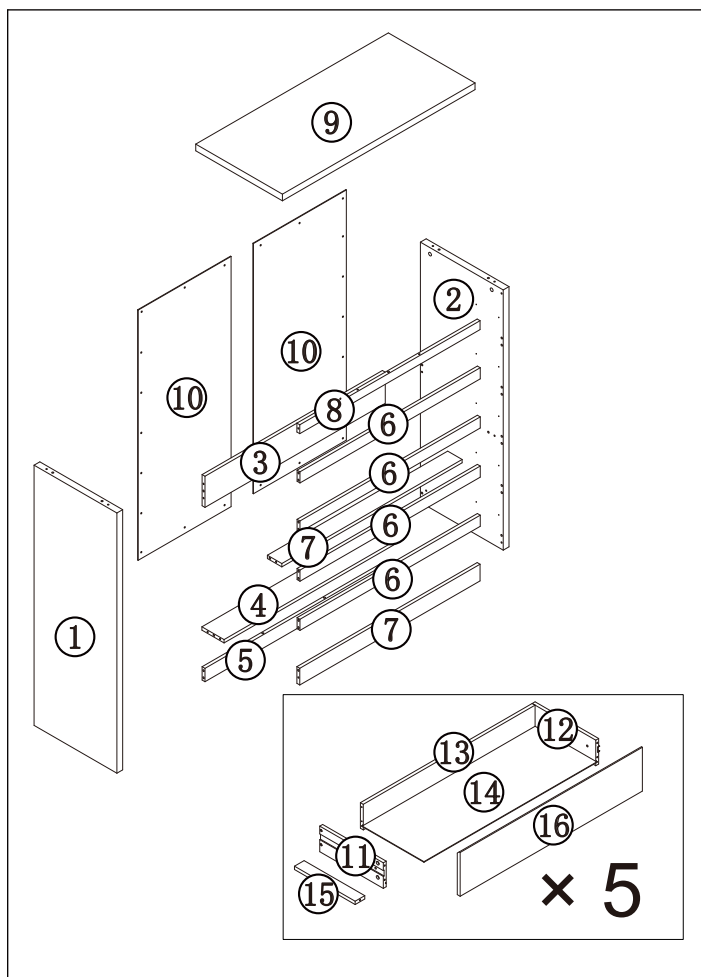
### Before you start:

1. Choose a clean, level, spacious assembly area. Avoid hard surfaces that may damage the product.
2. Take care when lifting. Product should be assembled as near as possible to the point of use.
3. Ensure that you have all required contents for complete assembly.
4. Always read the assembly instructions carefully before beginning assembly.
5. Keep all hardware parts and packaging out of reach of small children.
6. Do not over tighten the screws and bolts as this may damage the threads.



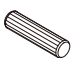






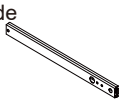




|  <b>WARNING</b> |   |   |
|--|---|---|
|                 |  | <p><b>Children have died from furniture tipover.</b></p> <ul style="list-style-type: none"><li>• ALWAYS secure it with an anchor device.</li><li>• NEVER allow children to stand, climb or hang on drawers, doors, or shelves.</li><li>• NEVER open more than one drawer at a time.</li><li>• Place heavy items down low</li></ul> <p><b>NEVER put a TV on this furniture</b> </p> <p><b>This is a permanent label. Do not remove!</b></p> |

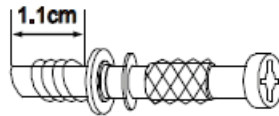
# PARTS LIST



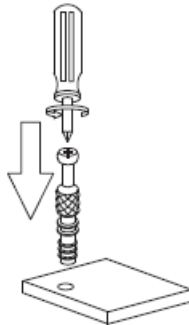
|    |                         |
|----|-------------------------|
| 1  | Left Side Panel         |
| 2  | Right Side Panel        |
| 3  | Connect panel           |
| 4  | Connect panel           |
| 5  | Rail                    |
| 6  | Rail                    |
| 7  | Connect panel           |
| 8  | Rail                    |
| 9  | Top Panel               |
| 10 | Back Panel              |
| 11 | Drawer Left Side Panel  |
| 12 | Drawer Right Side Panel |
| 13 | Drawer Back Panel       |
| 14 | Drawer base             |
| 15 | Connect panel           |
| 16 | Drawer Front Panel      |

|   |   |   |   |  |   |
|---|---|---|---|--|---|
| <div><div>A</div><div>cam pin</div><div></div><div>M7×39mm43×A</div></div> | <div><div>B</div><div>cam lock</div><div></div><div>43×B</div></div> | <div><div>C</div><div>dowel</div><div></div><div>M8×30mm35×C</div></div> | <div><div>D</div><div>screw</div><div></div><div>M3.5×14mm30×D</div></div> | <div><div>E</div><div>screw</div><div></div><div>M5×40mm25×E</div></div>               | <div><div>F</div><div>screw</div><div></div><div>M4×14mm10×F</div></div> |
| <div><div>G</div><div>screw</div><div></div><div>M3×16mm22×G</div></div>   | <div><div>H</div><div>foot nail</div><div></div><div>4×H</div></div> | <div><div>I</div><div>filler</div><div></div><div>1×I</div></div>        | <div><div>J</div><div>slide</div><div></div><div>10×J</div></div>          | <div><div>K</div><div>wall fixing</div><div></div><div>M4x30mmM3.5x14mm1×K</div></div> |   |
| <div><div>L</div><div>screw</div><div></div><div>M5×50mm2×K</div></div>    |   |   |   |  |   |

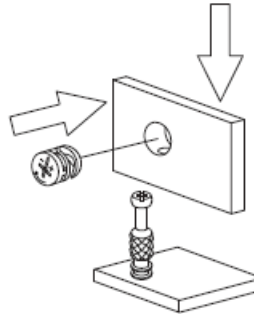
# CAM LOCK INSTALLATION



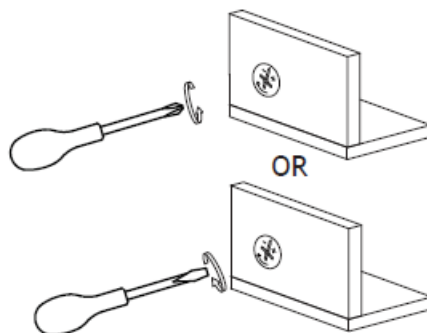
Step 1



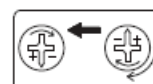
Step 2



Step 3

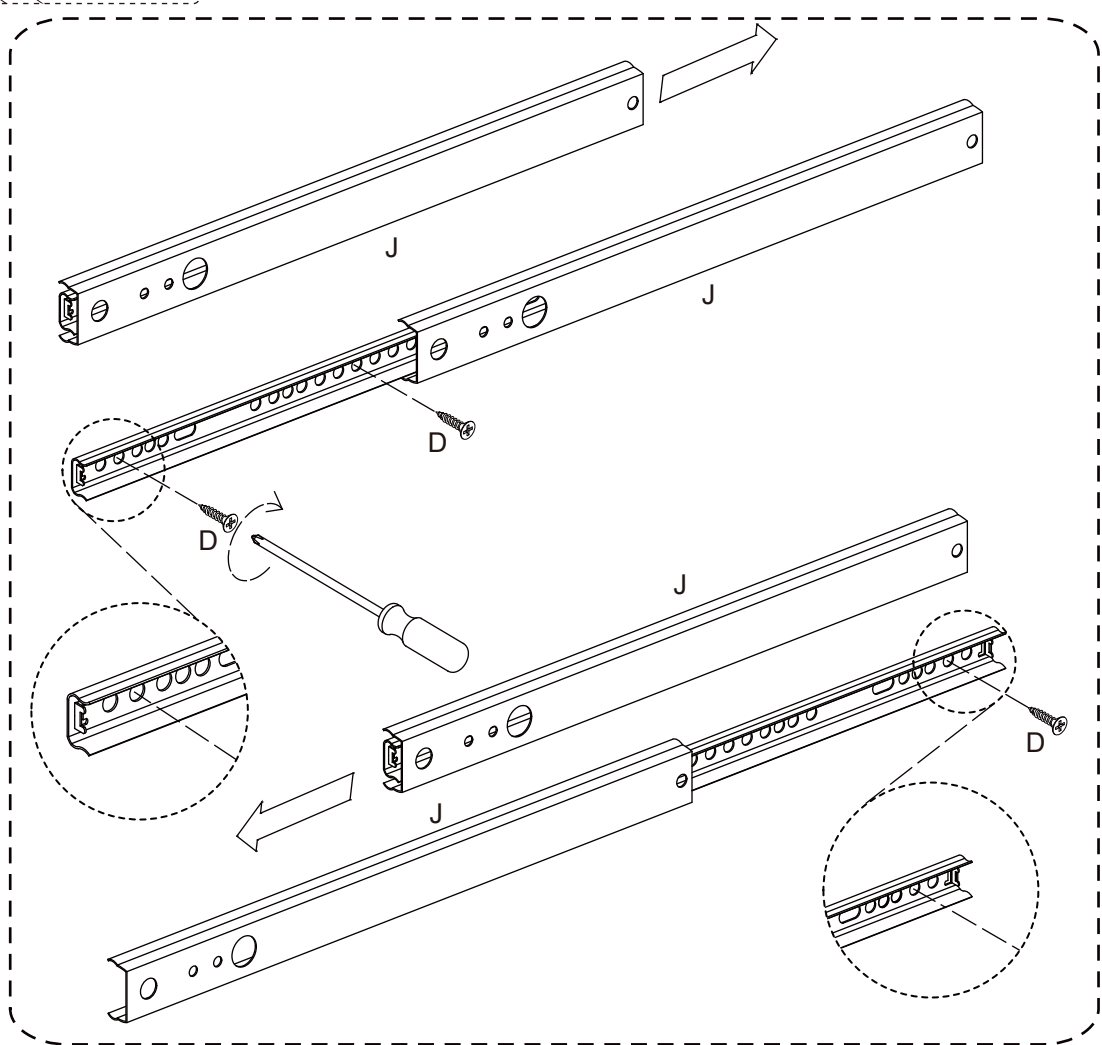
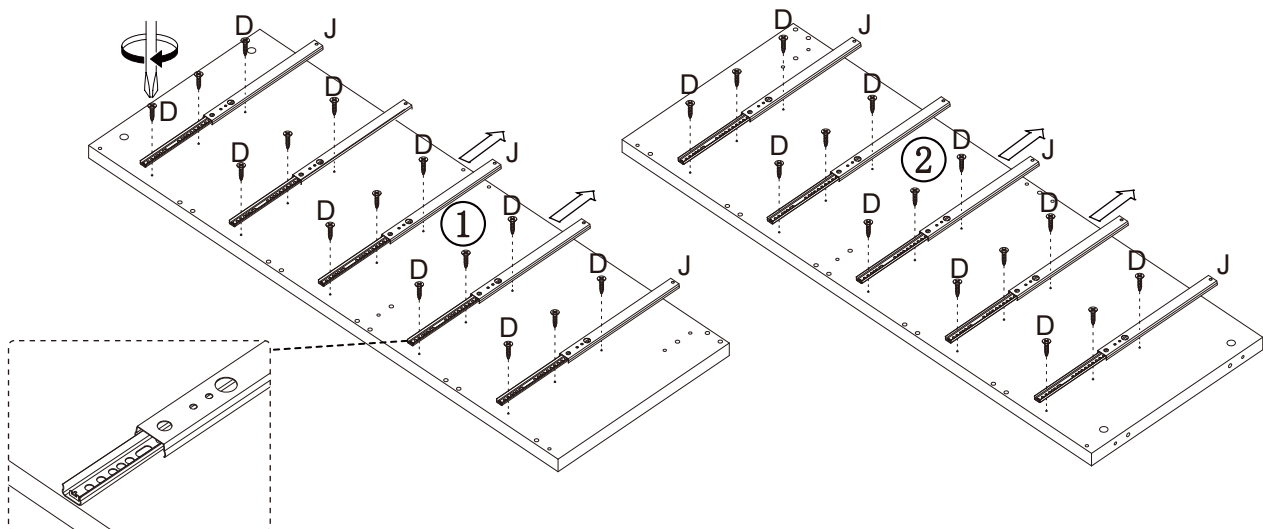


Lock

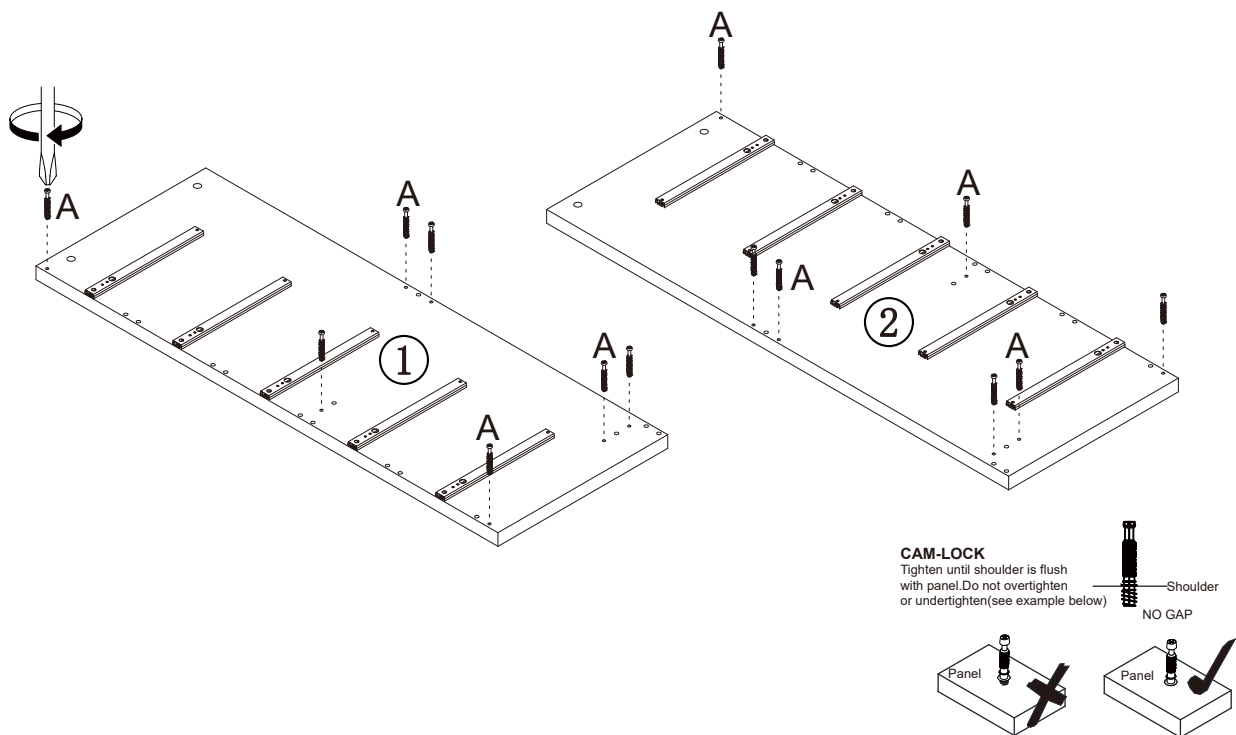


Fix cam nut into the bottom of hole then tighten it.

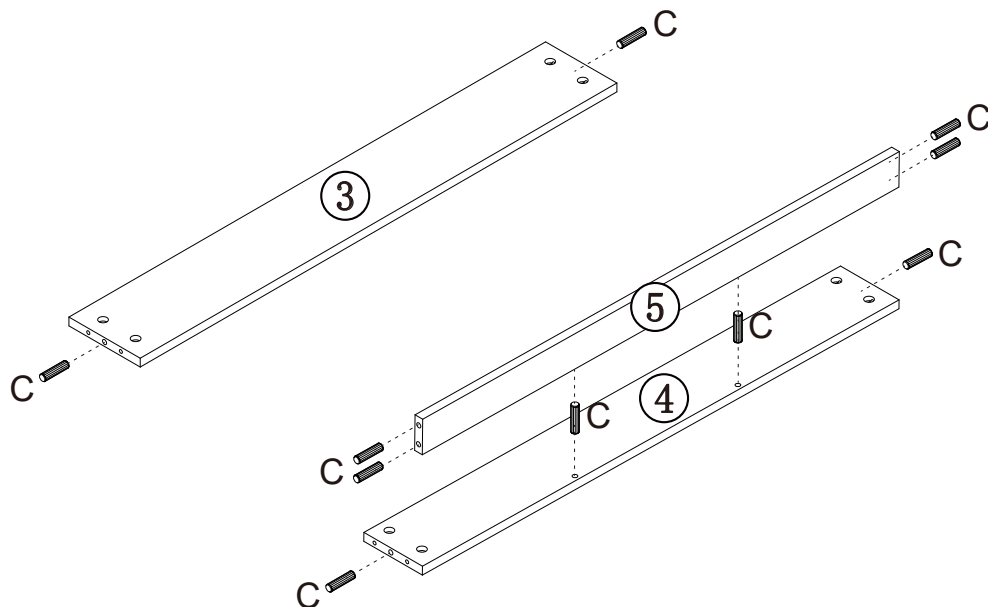
STEP1: Fix slide (J) to panel (1&2) with screws (D).



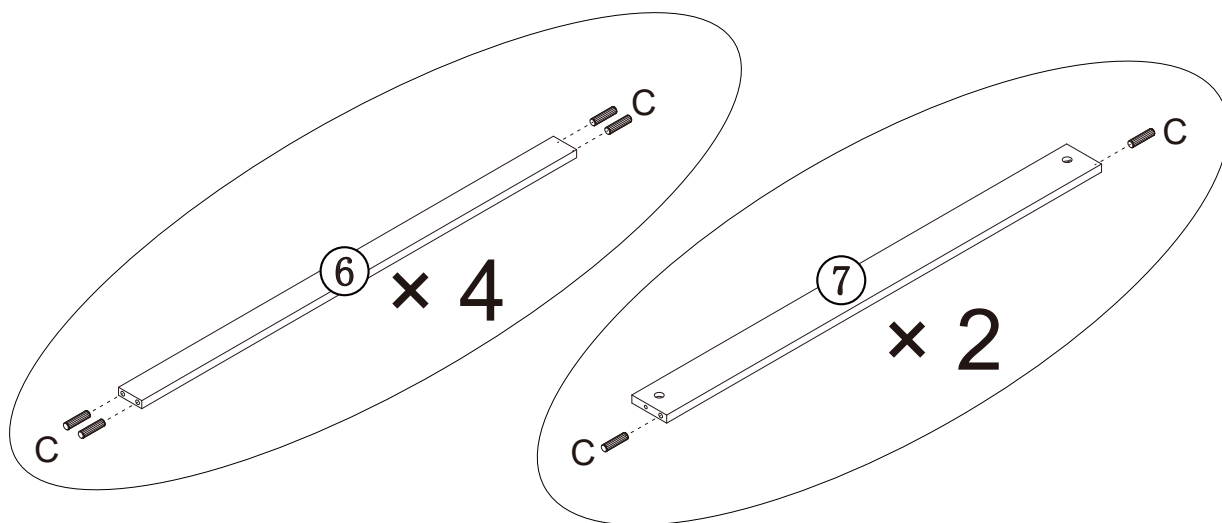
## STEP2: Fix cam pin (A) to panel (1&2).



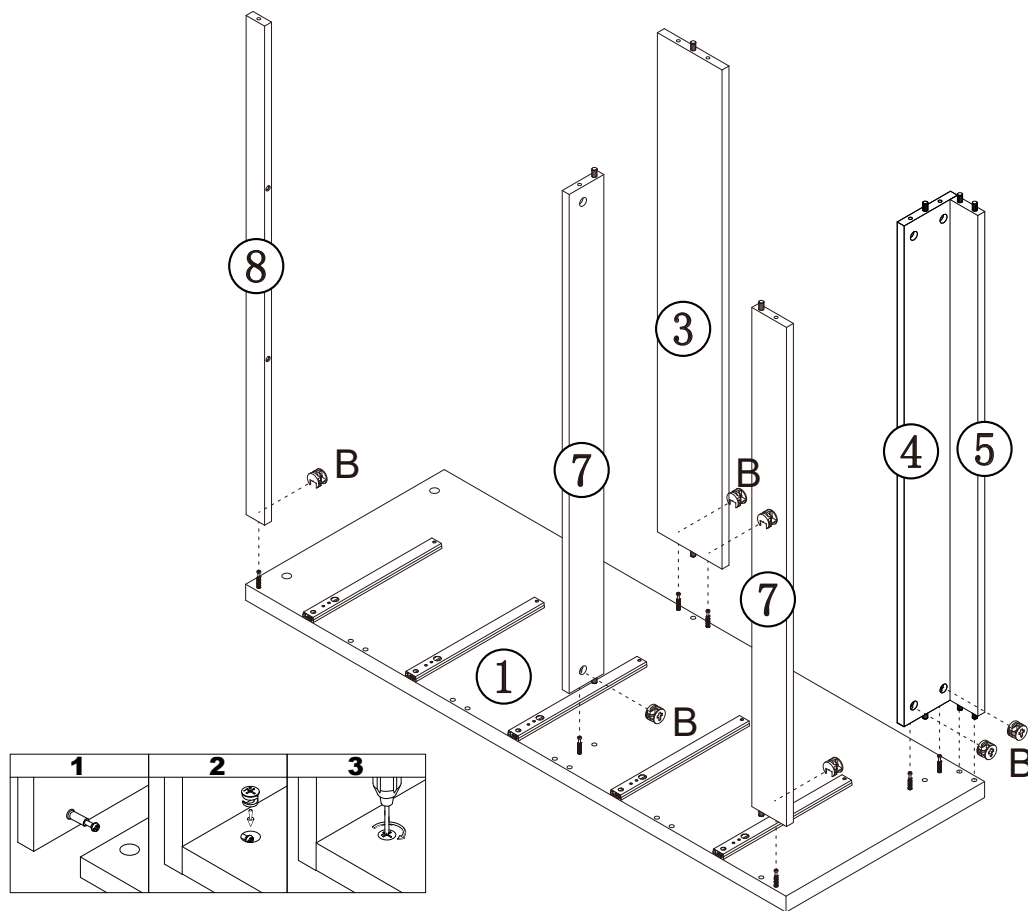
## STEP3: Insert dowel (C) to panel (3&4&5).



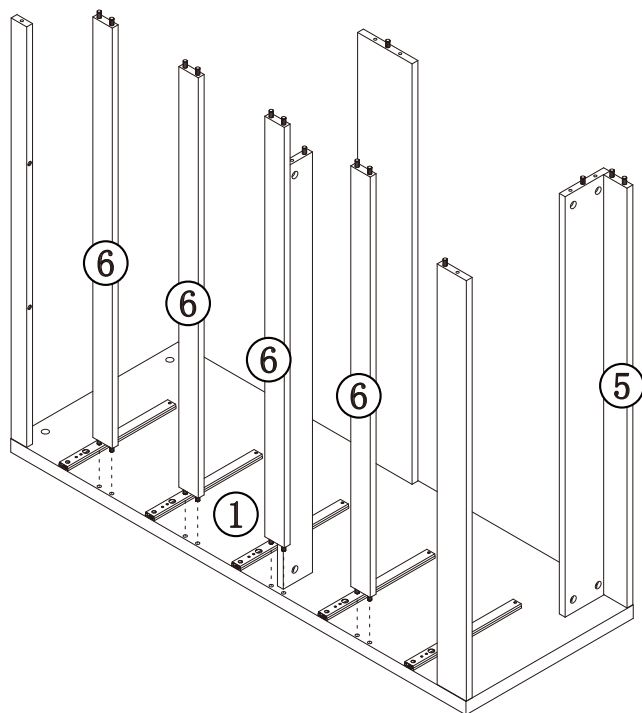
STEP4: Insert dowel (C) to panel (6&7).



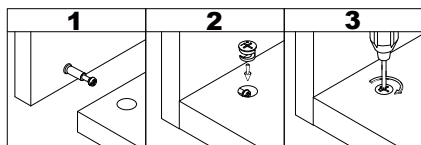
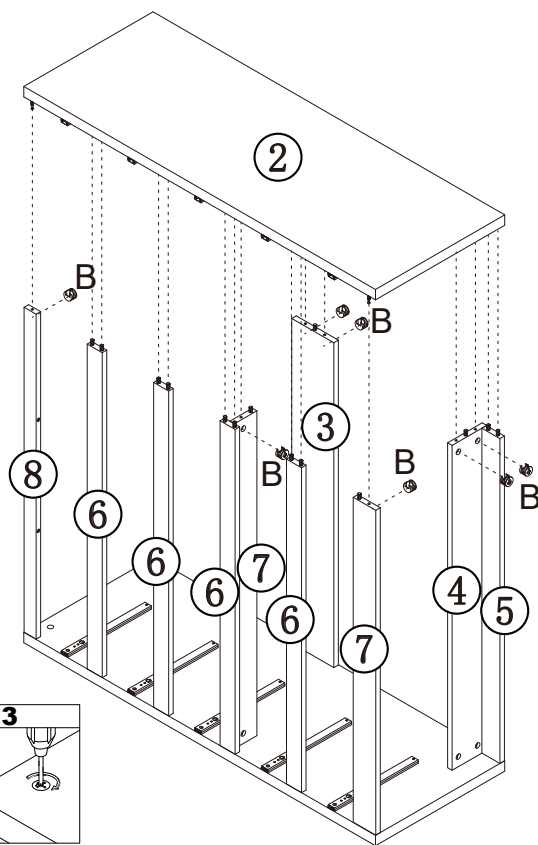
STEP5: Attach panel (3&4&5&7&8) to panel (1) with cam lock (B).



STEP6: Attach panel (6) to panel (1).

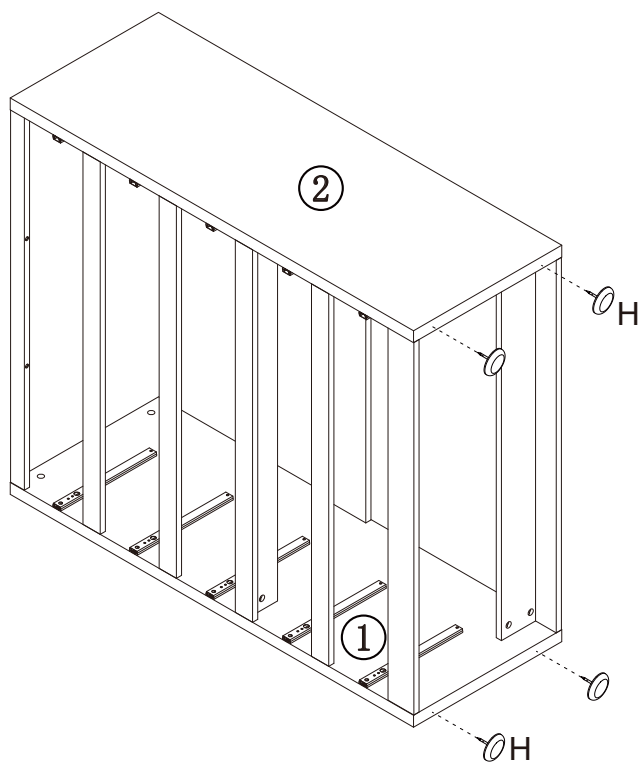


STEP7: Attach panel (2) to the body with cam lock (B).

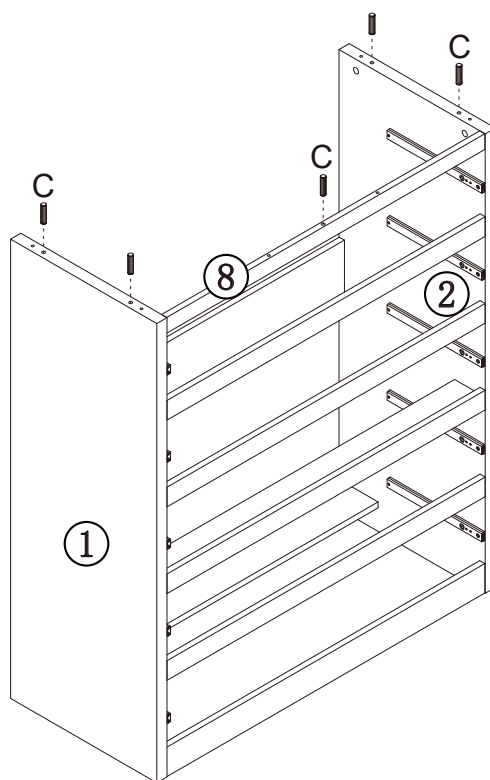




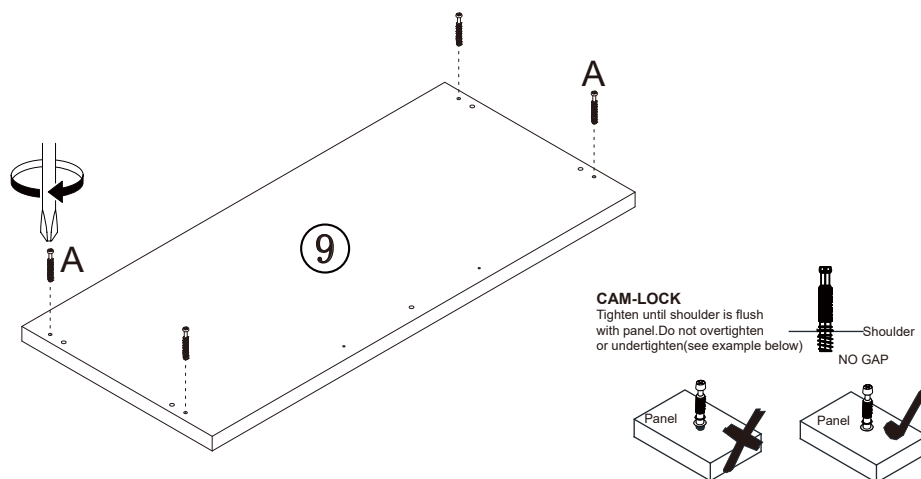
STEP8: Fix foot nail (H) to panel (1&2).



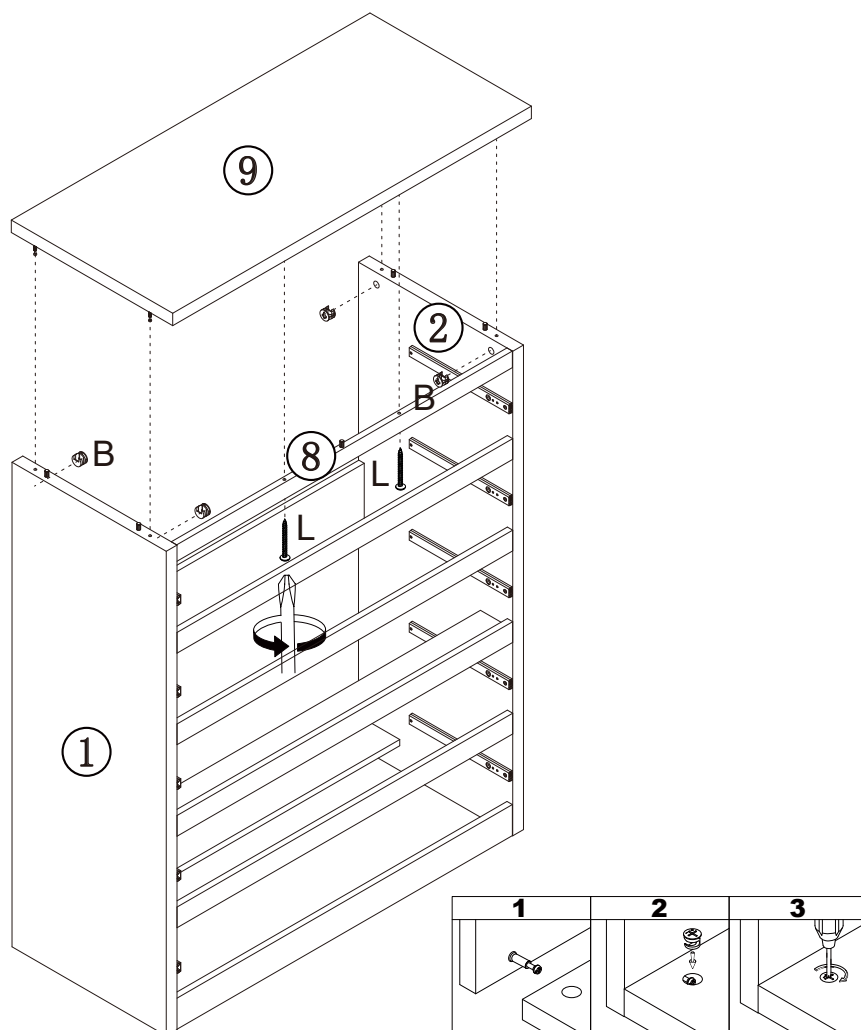
STEP9: Insert dowel (C) to panel (1&2&8).



## STEP10: Fix cam pin (A) to panel (9).

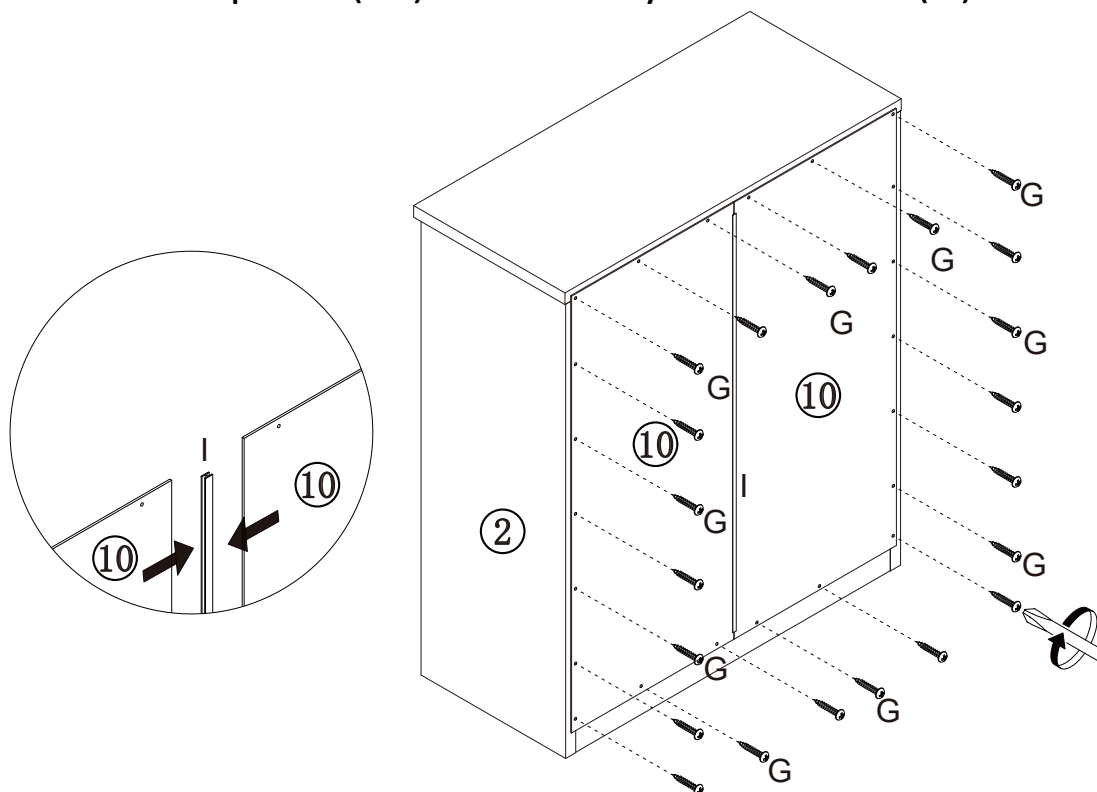


## STEP11: Attach panel (9) to the body with cam lock (B) and screws (L).



STEP12:Join panel (10) with filler (I).

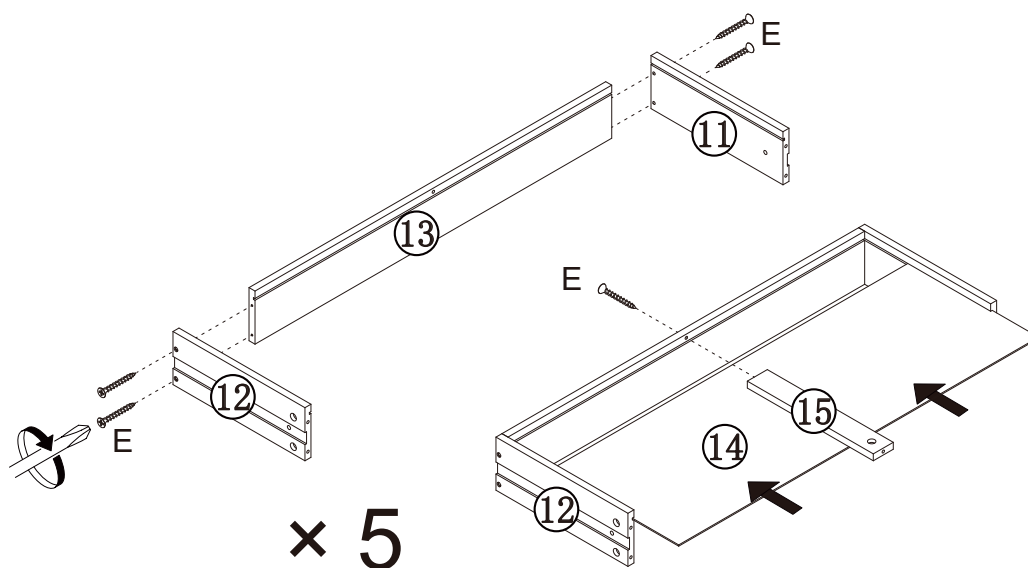
Attach panel (10) to the body with screws (G).



STEP13: Attach panel (11&12) to panel (13) with screws (E).

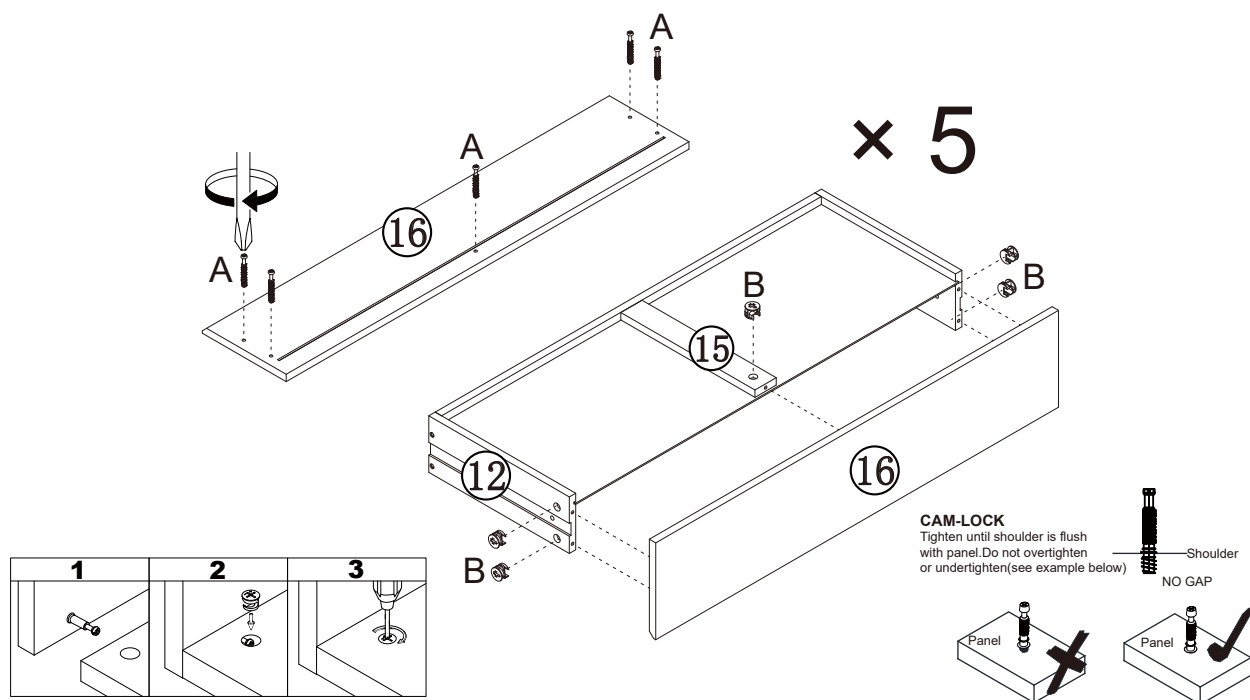
Insert drawer base (14) to drawer body.

Attach panel (15) to back panel with screws (E).



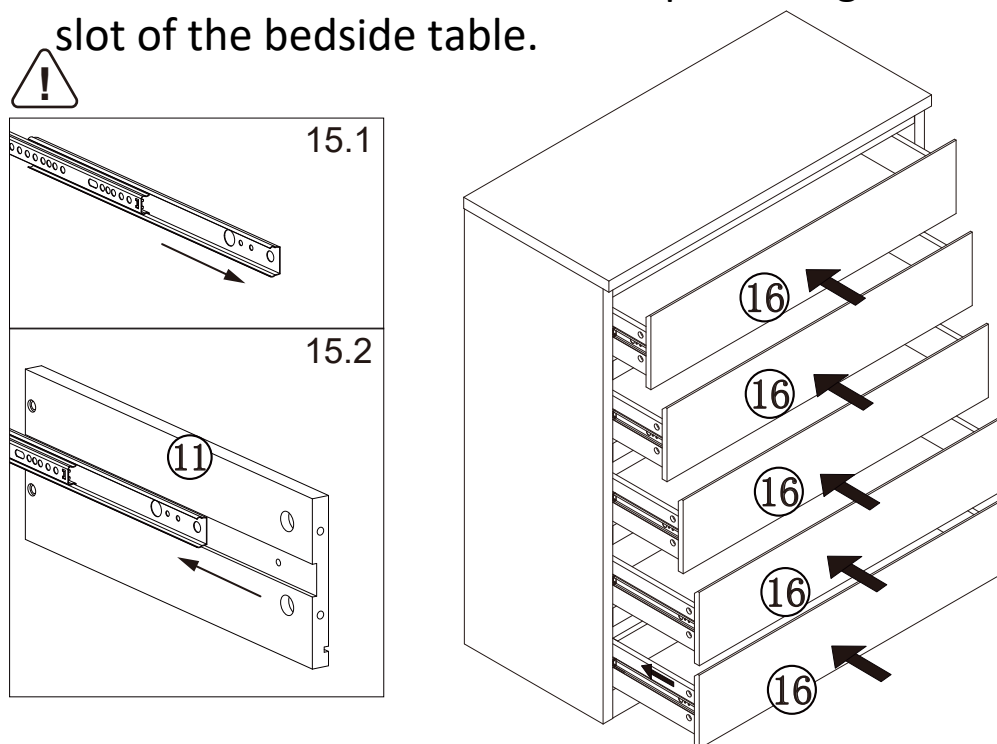
**STEP14: Fix cam pin (A) to panel (16).**

**Attach panel (16) to the body with cam lock (B).**



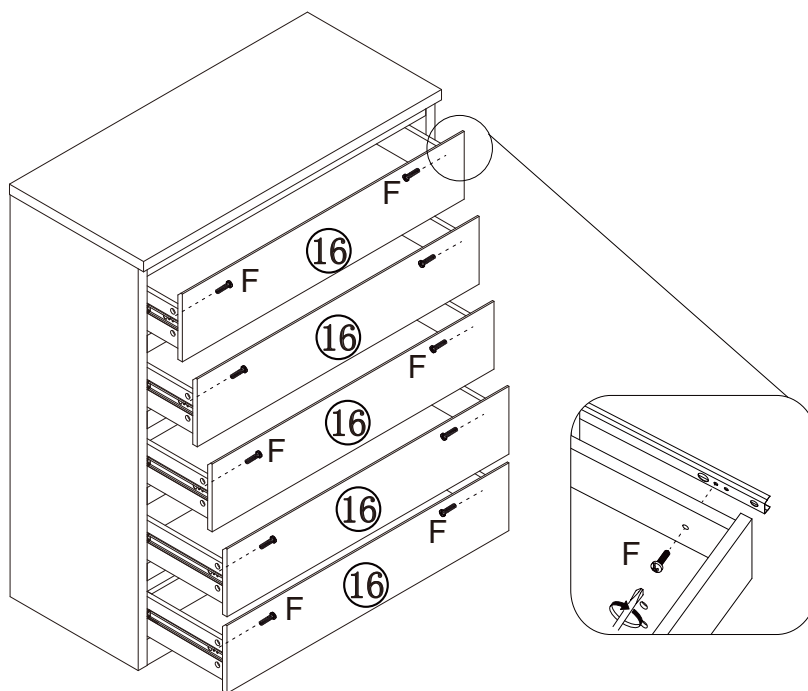
**STEP15: Fix slide (J) to drawer side panels.**

**Please insert the drawer with tip warning sticker to top slot of the bedside table.**

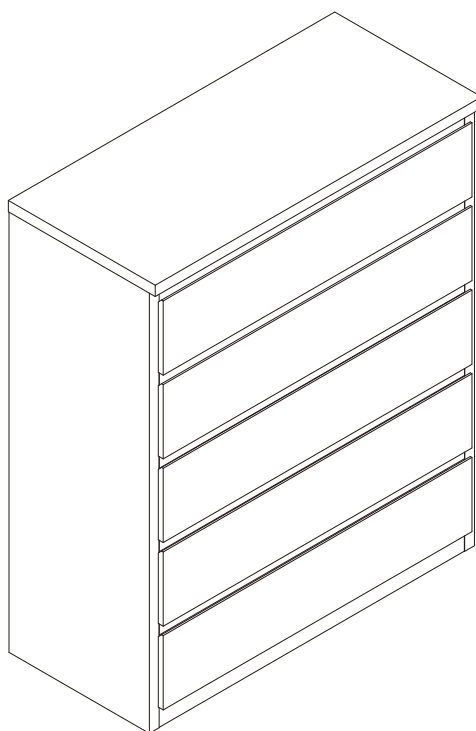


**STEP16: Lock slide (J) to drawer with screw (F).**

Please insert the drawer with tip warning sticker to top slot of the bedside table.



**ASSEMBLY IS COMPLETE**



## SAFETY BRACKETS INSTRUCTIONS

This furniture poses a tipping risk and as such must be secured to a wall using the provided tipping kit.

1. Attach one Mounting Plate to the wall with the Large Screws. Make sure to attach the Mounting Plate into a stud. If mounting into brick or masonry you will need to acquire wall anchors. Please enquire with your local hardware supplier for appropriate fixings.
2. Attach the second Mounting Plate to the furniture frame with the Short Screws.
3. Move the furniture to its final position. Thread a Wall Strap through the both Mounting Plates and tighten until snug. Do not over tighten.
4. Make sure that the Mounting Plates are firmly attached to the wall and furniture and that the Wall Strap is snug.

### HARDWARE



Mounting Plate x 2



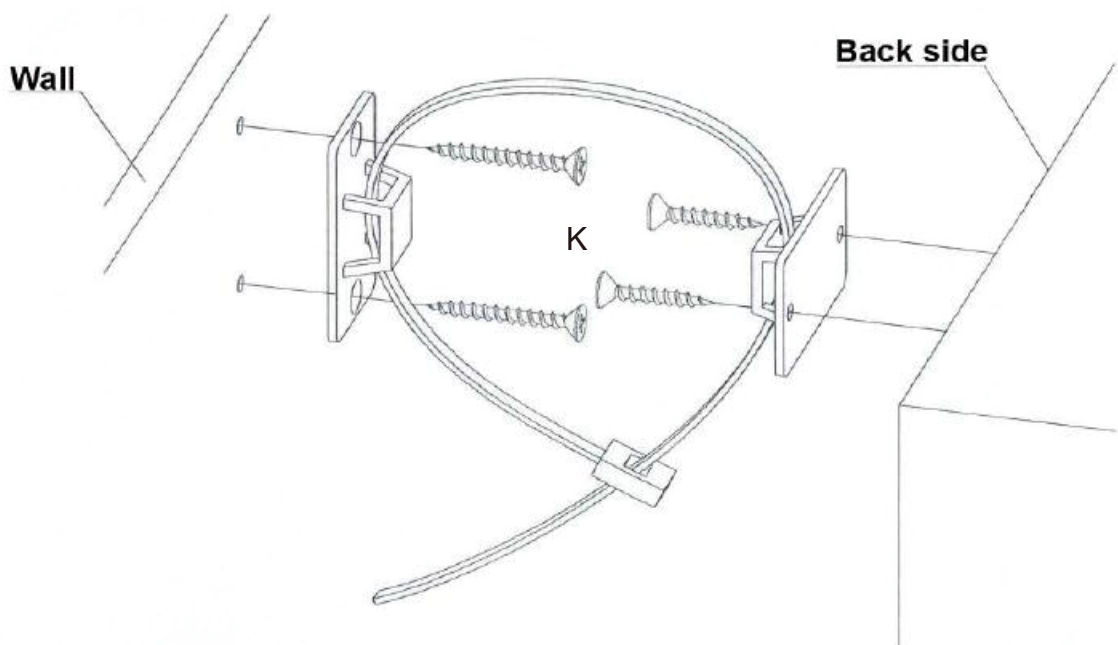
Wall Strap x 1



Large Screw x2



Small Screw x2



# General Product Care

To protect your furniture, we suggest the following:

- Avoid placing your furniture in direct sunlight.
- Do not place furniture directly under windows.
- Do not place sharp materials (knife, fork, etc.) directly onto your furniture as sharp material may scrape and damage the finish.
- Do not place material with high temperature directly onto the surface of your furniture.
- Clean up spills quickly. Water left over a prolonged period of time may cause damage. Alcohol, perfume, nail polishes, aftershave and some medication may cause severe finish damage if not cleaned immediately.
- Use a clean, soft, dry, lint free absorbent cloth to clean your furniture. Do not use any detergent as they may contain ingredients that may react and damage the finish.